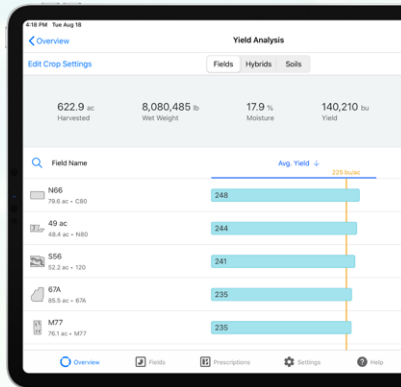


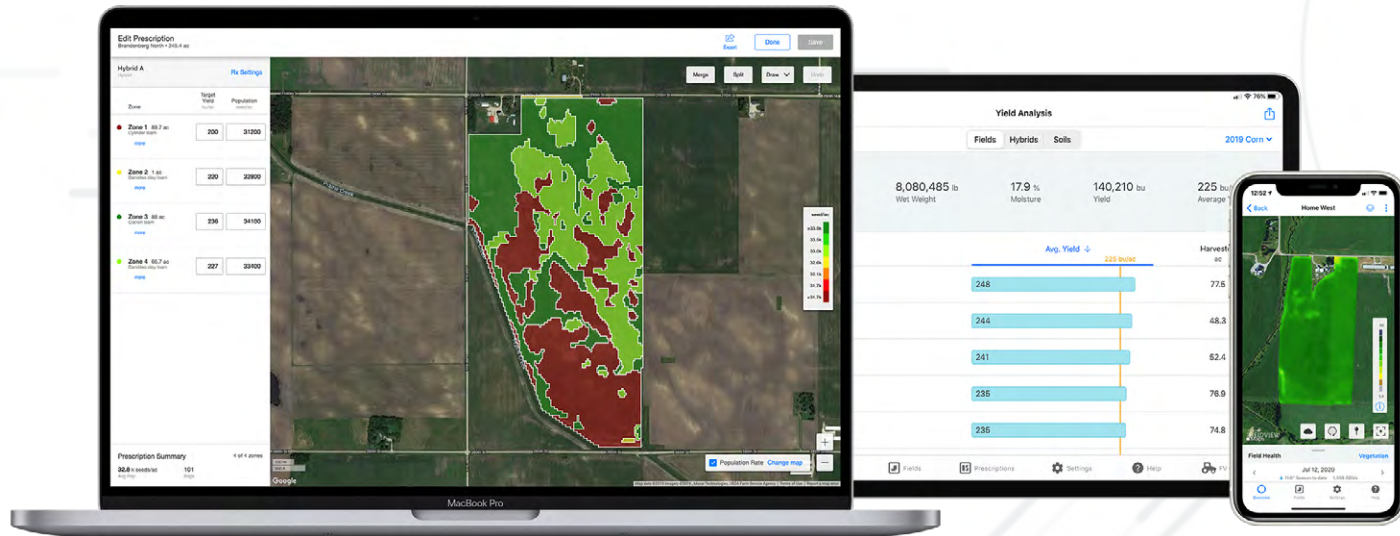


the digital farming platform
that turns your field data into *insights*



turn field data into *insights*

FieldView™ enables you to collect, store and analyze data on one easy-to-use platform. This powerful digital tool is backed by dedicated customer support, data-driven recommendations and cutting-edge science. Get the insights you need to make more informed decisions and maximize return.



building technology to *grow more*

We are the leader in bringing digital innovation to farmers, with a mission to help all the world's farmers sustainably increase their productivity through the use of digital tools. Behind every farmer's FieldView account is our unique blend of agronomic science, data science, software engineering and real-world farming experience.





contents

collect data seamlessly

easy field data collection and sharing	10
monitor progress in real time	12
the power of partnership	14

build prescriptions in minutes

FieldView™ seed scripts	18
fertility scripts	20
crop protection scripts	22

scout fields from anywhere

field health	26
--------------------	----

analyze yield data instantly

yield analysis	30
----------------------	----

pricing and support

features and pricing	34
customer support	36





get your data in one place

Get all your data in one place with compatibility across many equipment types, makes and models, and connectivity to multiple farm management software systems. FieldView helps you easily collect, store and view field data for more of the inputs you manage through the season.



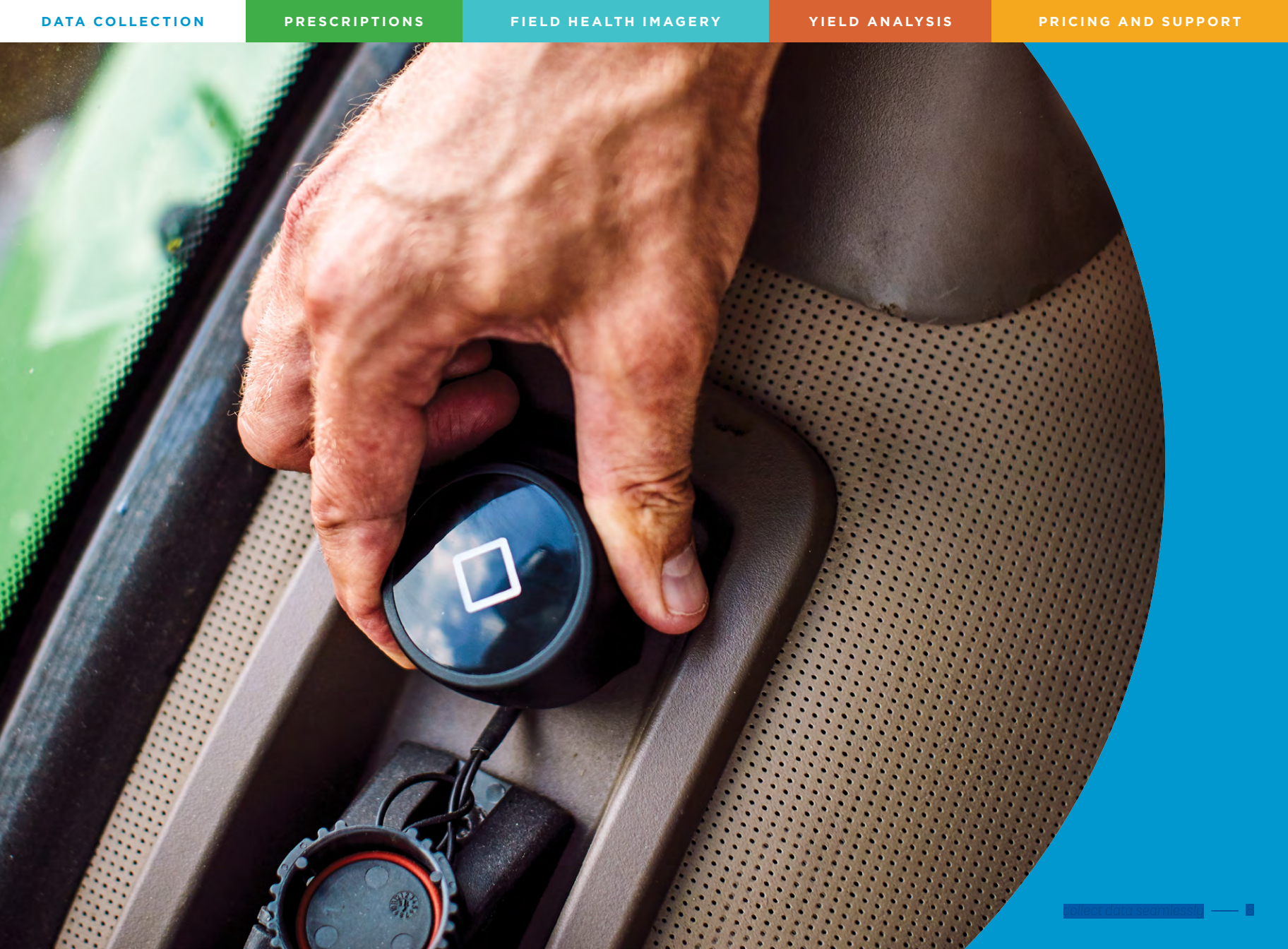
uncover valuable field insights

Uncover valuable insights year-round with tools that help you analyze crop performance at the field level or by field zone, essentially making every field a potential test plot.



optimize your inputs

Optimize inputs to maximize yield and profitability on every acre with variable rate seeding, fertility and crop protection prescription tools.



collect *data* seamlessly

easy *field data collection* and sharing



Collect and store data for every pass on your field with your equipment of choice using the FieldView™ Drive, or Precision Planting 20/20 SeedSense® and YieldSense® monitors. You can also upload data seamlessly from flash drives or other systems. You have the option to share your operation's data with your agronomic partners, making it easy for them to provide informed insights and recommendations.

Share my Operation, Farms, or Fields

Sharing your account allows the email listed below to view and analyze your operational data. This does not share raw data files.

☒ Share whole operation[+ Share a farm](#)[+ Share a field](#)

Operation Name	Farms	Fields	Sharing Permissions
My Operation	4/4	12/12	Can Edit - including Yield Data ▼

By clicking "Share" below, you are allowing Climate to share your selected operation(s), farm(s) or field(s) with the individual(s) you have designated. Authorized non-Climate (3rd party) applications connected to the individual(s) you designated may access your data.

[Learn More](#)

If you decide to share your data with your agronomic partners, you have the option to share your entire operation, one farm or single fields.

The FieldView Drive is simple to install and compatible with 80% of equipment types.*

FieldView is the

most connected platform

in the industry, with connectivity between our platform and many agronomic software partners. Data sharing is easy, and farmers are always in control of how their data is shared with partners.

*For questions about machine compatibility, visit climate.com/compatibility or contact Climate Support at 1-888-924-7475.

monitor progress in *real time*



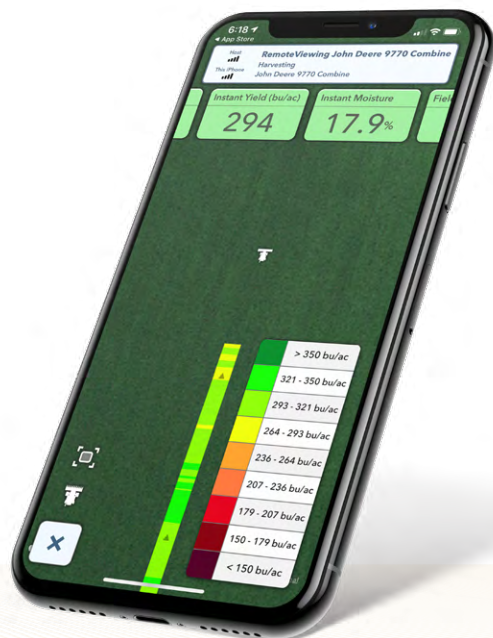
Monitor your progress and spot potential issues in real time as you pass through the field, tracking seed population rate at planting, application rates during growing season, and yield at harvest, so you can get the most out of every crop.

[click to watch testimonial](#)

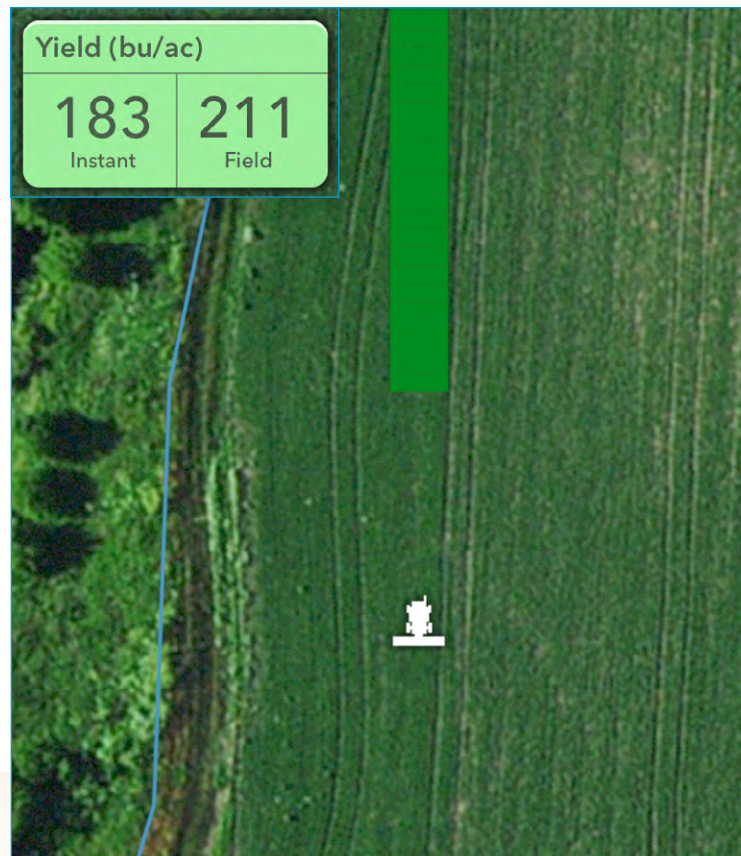


"It's simple for me to remote in to see what's going on and solve an issue with a phone call instead of driving to the field."

—Tim Brand, MO



Remote viewing allows you to see maps build even when you're not in the cab. Available on your iPhone® and iPad® devices.



Track yield in real time during harvest.



click to watch video
Learn More About
Data Visualization

the power of *partnership*



The FieldView platform is the central hub of digital farming innovation, providing you the choice to access to a broad and interconnected set of tools from more than 70 platform partners — from aerial imagery, to insurance, soil analysis and more.

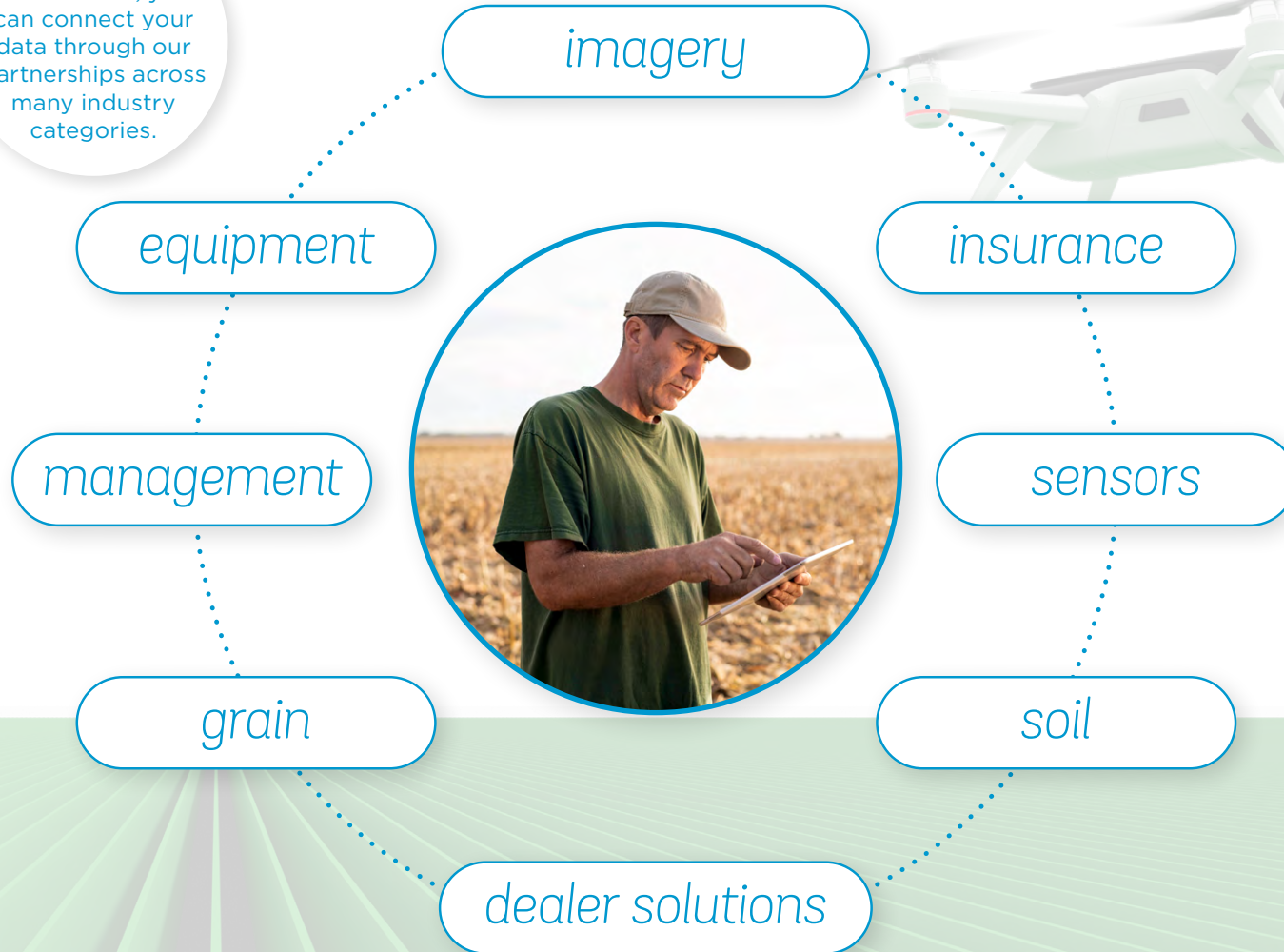
[click to watch testimonial](#)



“Our aerial imagery partner allows us to seamlessly integrate their images into FieldView so we can compare additional map layers for better insights.”

—Logan Beyke, KY

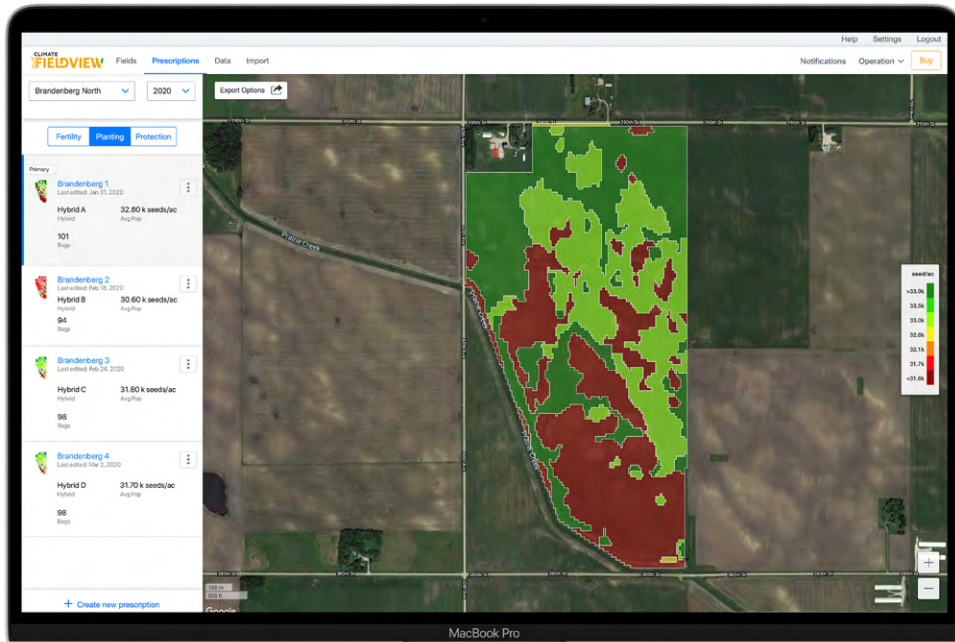
You're in the driver's seat, you can connect your data through our partnerships across many industry categories.





build *prescriptions*
in minutes

maximize yield with variable rate seed prescriptions



With all your data in one place, it's easy to build prescriptions on your own or with your dealer. FieldView seed scripts are powered by unique research and scientific models, along with your field data, to optimize your investment. You can also use our simple manual seed prescription tools to save time and improve productivity.

[click to watch testimonial](#)



"Using the FieldView seed scripts tool has allowed us to use maybe not less seed, but place that seed where it can be more profitable."

—Justin Hanson, IA

Zone	Target Yield bu/ac	Population seed/ac
Zone 1 0.1 ac Sylvan silty clay loam more	248.9	35600
Zone 2 37.1 ac Muscatine silt loam more	231.0	34500
Zone 3 77.3 ac Muscatine silt loam more	257.7	36100
Prescription Summary 3 of 3 zones 35.6 k seeds/ac 51 Avg Pop Bags		
FieldView seed scripts are customized for you by zone, population rate and yield, and available for nearly any seed brand.		



Farmers using FieldView seed scripts saw an average increase of

+5
bu/ac

compared to users who wrote their own scripts.*

*Assumptions: Comparing 281,000 ac in 4,179 fields. More than 25% of field had script. Products' maturity ranges between 95-115. Limiting comparisons to the same county; represents 79 counties in 10 Midwestern states. Minimum of 3 Advanced & DIY seed scripts in a county to be compared.

Target Yield	Seed Cost	Grain Price	No. of Zones	Lower Investment	Higher Est. Yield
250	\$375.00	\$3.40	3	<input type="range"/>	<input type="range"/>

Tailor your prescription to your unique yield and profitability goals.



click to listen to podcast
How to Make Seed Scripting and Test Plots Easier

easily manage your fertility prescriptions year round



Build a customized fertility plan on your own or with your dealer to get the most out of your field variability with easy-to-use manual fertility prescription tools for nitrogen, phosphorus, potassium and lime. These additional map layers are right at your fingertips for easy analysis.

Edit Prescription

Speer Farm North • 114.5 ac

Anhydrous Ammonia

Fertilizer

[Rx Settings](#)

Zone	N Rate lb/ac	Product Rate lb/ac
<div>●</div> Zone 1 2.6 ac Sylvan silty clay loam more	140	171
<div>●</div> Zone 2 5.7 ac Greenbush silt loam more	150	183
<div>●</div> Zone 3 16.4 ac Osco silt loam more	162	198
<div>●</div> Zone 4 89.9 ac Muscatine silt loam more	158	193

Prescription Summary

4 of 4 zones

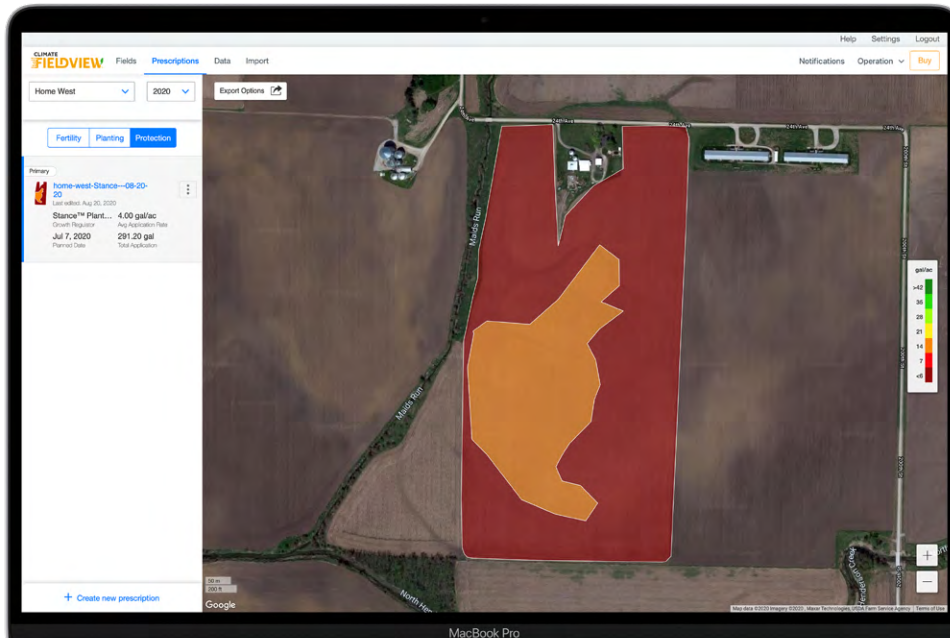
157.8 lb/ac
Avg N Rate192.4 lb/ac
Avg Product Rate11.02 tons
Total Product

Customize variable rate fertility prescriptions by zone and product rate.



View and edit your customized zones to maximize your fertility plan.

tailor *crop protection* application by zone



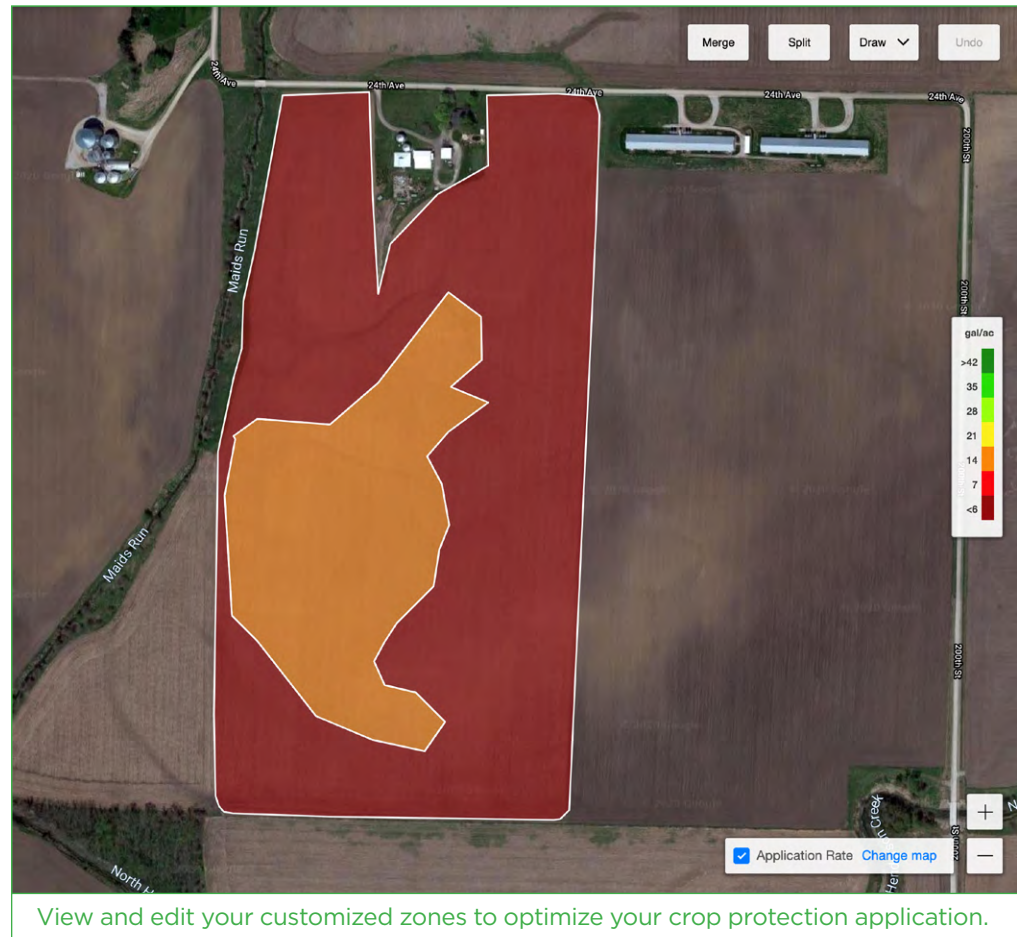
NEW! Quickly address changing crop conditions in season with variable rate crop protection scripts for herbicide, fungicide, insecticide or growth regulators. Use multiple map layers, such as field-level satellite imagery, to identify management zones and easily create scripts on your own or with your dealer.

Zone	Application Rate gal/ac
<div>● Zone 1 19.4 ac Osco silt loam more</div>	<input type="text" value="15"/>
<div>● Zone 2 52.9 ac Muscatine silt loam more</div>	<input type="text" value="10"/>

Prescription Summary
2 of 2 zones

4 gal/ac	291.2 gal
Avg Application Rate	Total Application

Customize variable rate crop protection prescriptions by zone and application rate.



click to watch vidcast
Strategies to Defend Your
Yield from Threats



scout fields

from anywhere

use imagery to *see your fields* like never before



Find out what's happening beyond the end rows with consistent, high-quality imagery that can help you identify issues early, prioritize scouting and take action to protect yield. Save valuable time with electronic and print options to share with agronomic partners.



"Field health imagery definitely changes the way I scout. I can set a higher priority to what areas of the field I need to spend my time on."

—Jon Schram, NE



Close **Region Report**

Region note 1
Description, photos and more >

5.6 ac
Harvested

16.4 %
Moisture

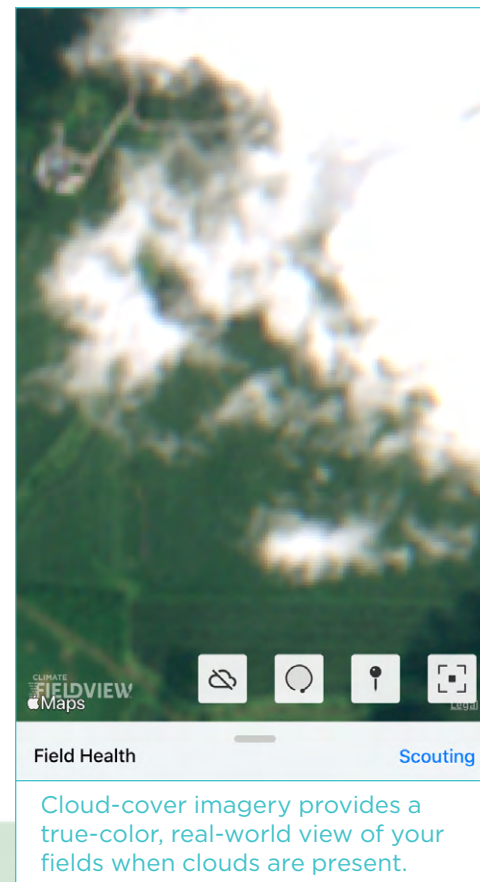
262 bu/ac
Avg Yield

By Hybrid	Avg Yield	acre
● Hybrid A	258	2.8 >

By Soil	Avg Yield	acre
Hickory-Sylvan silt loa...	273	0.4 >
Sylvan silty clay loam, 1...	267	0.6 >
Oско silt loam, 5 to 10...	262	4.0 >
Muscataune silt loam, 0...	256	0.6 >

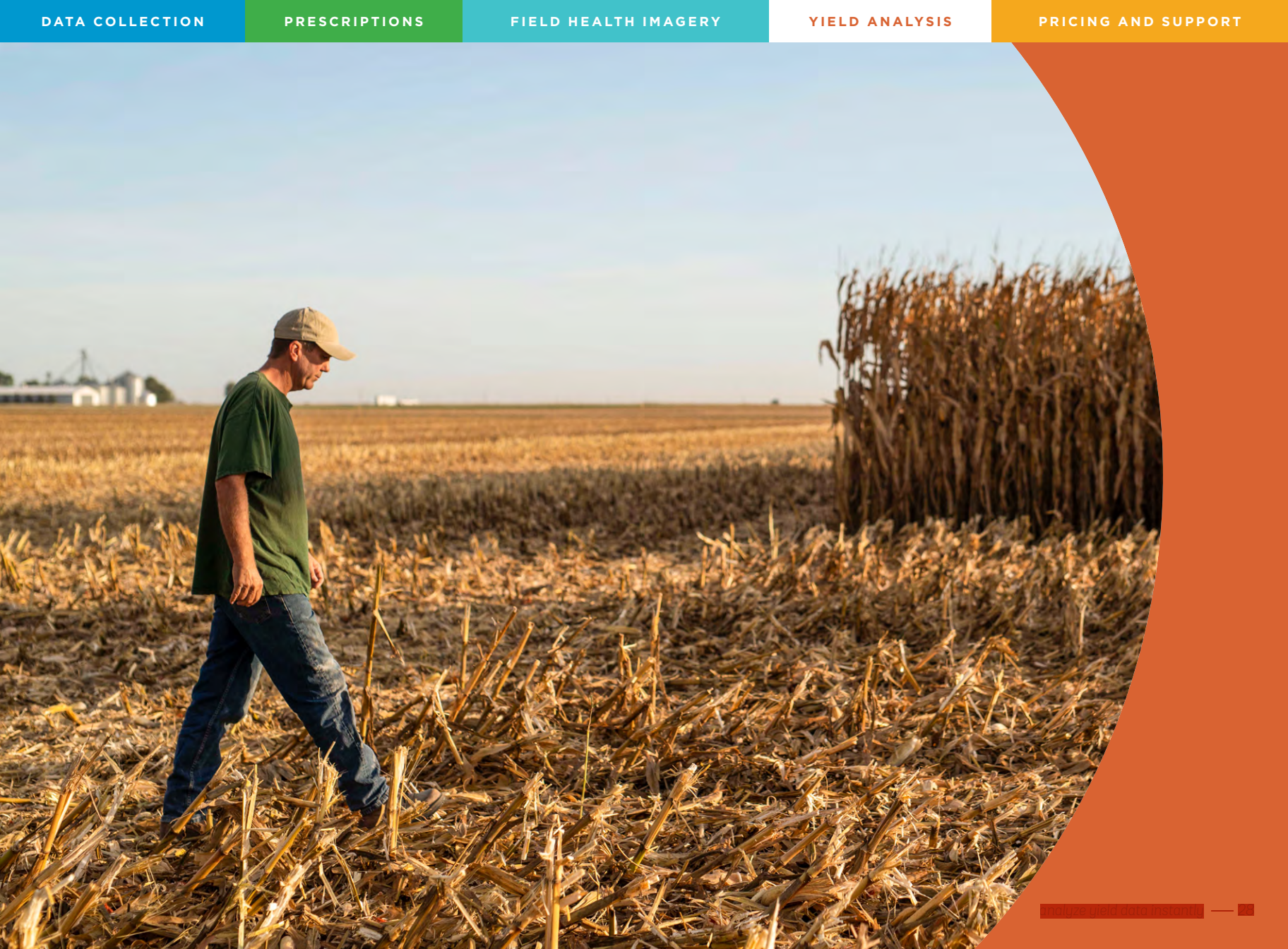
By Population	Avg Yield	acre
---------------	-----------	------

Use scouting maps to identify and save field regions for deeper analysis.



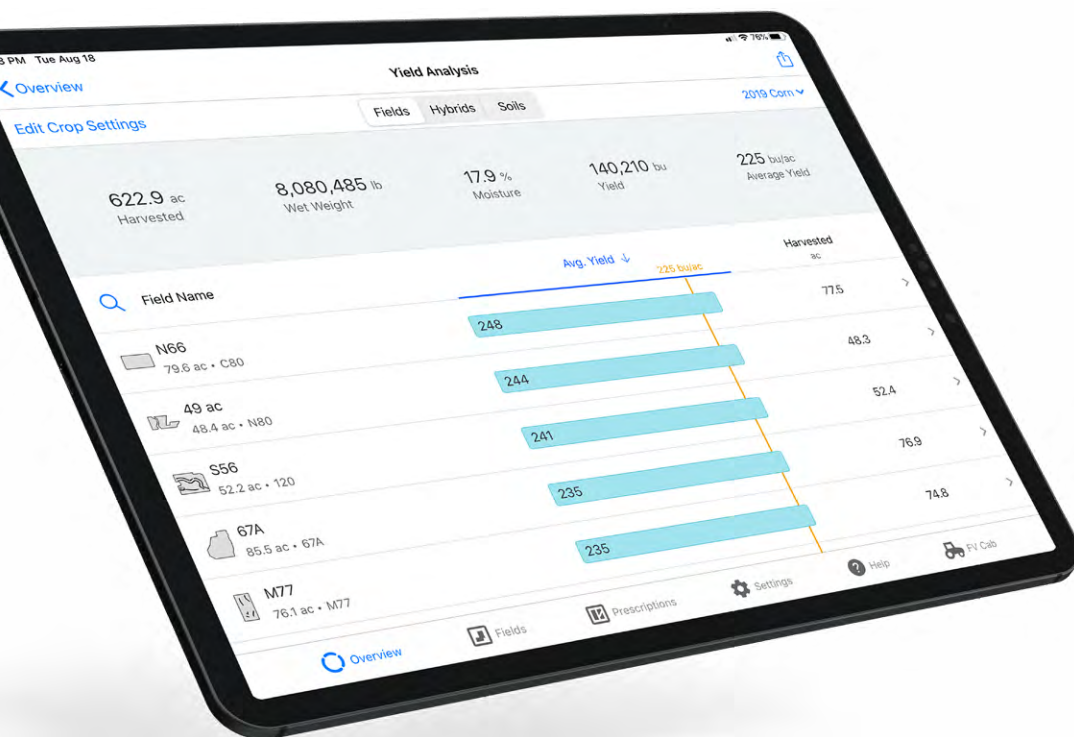
click to watch vidcast

Crop Scouting Strategies:
Boots on the Ground to New
Tech Tools



analyze
yield data *instantly*

analyze *crop performance* instantly



Analyze yield by seed type, soil, field or custom zone immediately after harvest, so you can see what worked and what didn't. Easily share with your agronomic partners to start planning for the next season. Compare critical data layers such as soil maps, application rate and seed population to yield to make more informed decisions.

[click to watch testimonial](#)

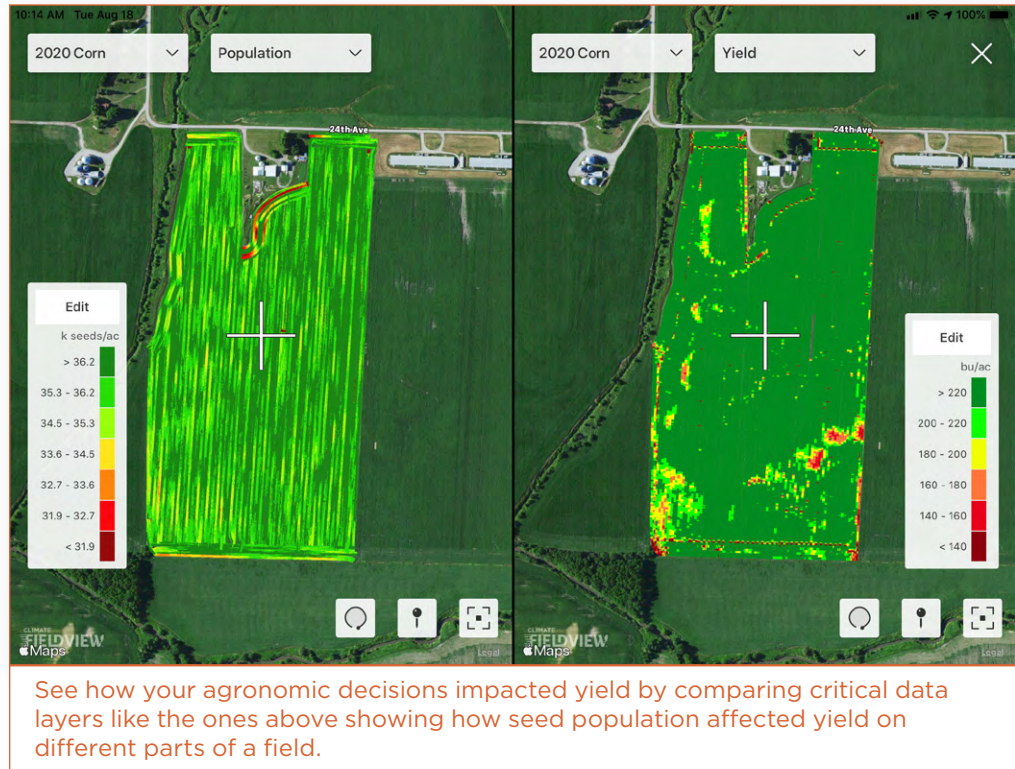


"We use the yield analysis tool on every field for making decisions on population, seed selection and seed placement, and we've seen a big effect on our bottom line."

—Scott Friestad, IL

Overview 2019 Corn All Operations			
Fields Hybrids Soils			
1,060.9 ac Harvested	20.9 % Moisture	237,278 bu Yield	
Field Name	Yield ↓ 224 bu/ac	Harvested ac	
Big Bottom Operation	265	122.3	>
Elkhorn Creek Operation	265	122.3	>
Barbs 80 Operation	239	72.1	>
Green Valley Operation	234	94.0	>
Bottoms Operation	227	103.0	>

Analyze yield performance by field, seed, and soil type.





click to watch video
Learn More About
Yield Analysis



pricing and *support*

FieldView *product features*

	 FIELDVIEW prime	 FIELDVIEW plus
Weather	+	+
Scouting	+	+
Simple Data Visualization	+	+
Field Summary Data and Reports	+	+
Data Inbox	+	+
Cloud Storage	+	+
Yield Analysis		+
Side-By-Side Visualization		+
Field Region Reports		+
Field Health Imagery		+
Manual Seed Scripts		+
Manual Fertility Scripts		+
Manual Crop Protection Scripts		+
Remote View		+

FieldView *pricing*

FIELDVIEW^{prime}

Simple tools for timely decision making

free

FIELDVIEW^{plus}

Seamless data integration and analysis for a deeper understanding of your business

*free with Bayer
PLUS Rewards**

or \$99/year

FIELDVIEW^{drive}



\$249

FieldView Drive



\$299

FieldView Drive
Starter Kit

Includes a FieldView
Drive and mounting
kit for iPad® device

FieldView[™] Seed Scripts

Powered by unique research and scientific models, along with your field data, you can easily create variable rate planting prescriptions tailored to your fields.

\$1/acre

Requires a FieldView[™] Plus subscription

*Find out how you can get
FieldView Plus free for one year.**

Visit Climate.com/Bayer-PLUS or
contact your local dealer.

Contact your dealer, [get started at climate.com](https://climate.com) or let us walk you through our plan options at 1.888.924.7475.

*Offer available to new and existing Climate FieldView customers. Valid email address required. FieldView[™] Drive and FieldView Drive Starter Kit are not included and must be purchased separately. For current customers, the free 12 month period is added to your account and begins on the renewal date of your current subscription.



The Climate Support team is based in St. Louis, Mo.



[click to watch testimonial](#)

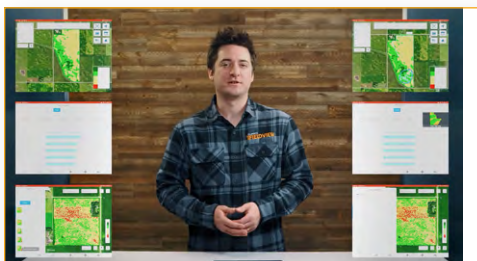
“I think what sets FieldView apart from other companies is that there’s an entire support team that’s just a phone call away.”

—Sara Haar, FieldView Dealer

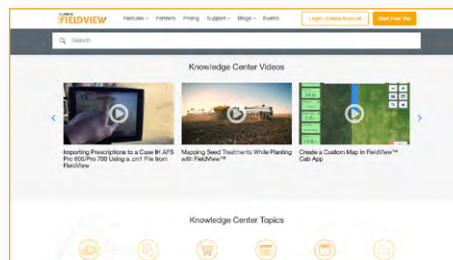
get *support* when you need it most

Our knowledgeable customer service staff is here to help you navigate our digital tools, upload data, and more. Contact us at 1.888.924.7475, support@climate.com or live chat with us at climate.com. If you need help getting your account set up or connecting your FieldView Drive for capture of critical planting and harvest data, contact your FieldView dealer or call our support team and we'll send a Climate Activation Specialist directly to your operation.

Or, if you're more of a do-it-yourselfer, check out our [Getting Started](#) or [Product Support](#) to find how-to videos and a library of detailed product information.



Watch step-by-step videos to help you get started.



Search and access information on any topic in the Knowledge Center.



facebook.com/climatecorp



linkedin.com/company/the-climate-corporation



twitter.com/fieldviewhelp



youtube.com/climatecorp



CLIMATE.COM



Services and products offered by The Climate Corporation are subject to the customer agreeing to our Terms of Service. Our services provide estimates or recommendations based on models. These do not guarantee results. Before making financial, risk management and farming decisions, agronomists, commodities brokers and other service professionals should be consulted. More information at <http://climate.com/disclaimers>. iPad® is a registered trademark of Apple Inc. All other trademarks and trade names are the property of their respective holders. FieldView™ is a trademark of The Climate Corporation. © 2020 The Climate Corporation. All Rights Reserved.