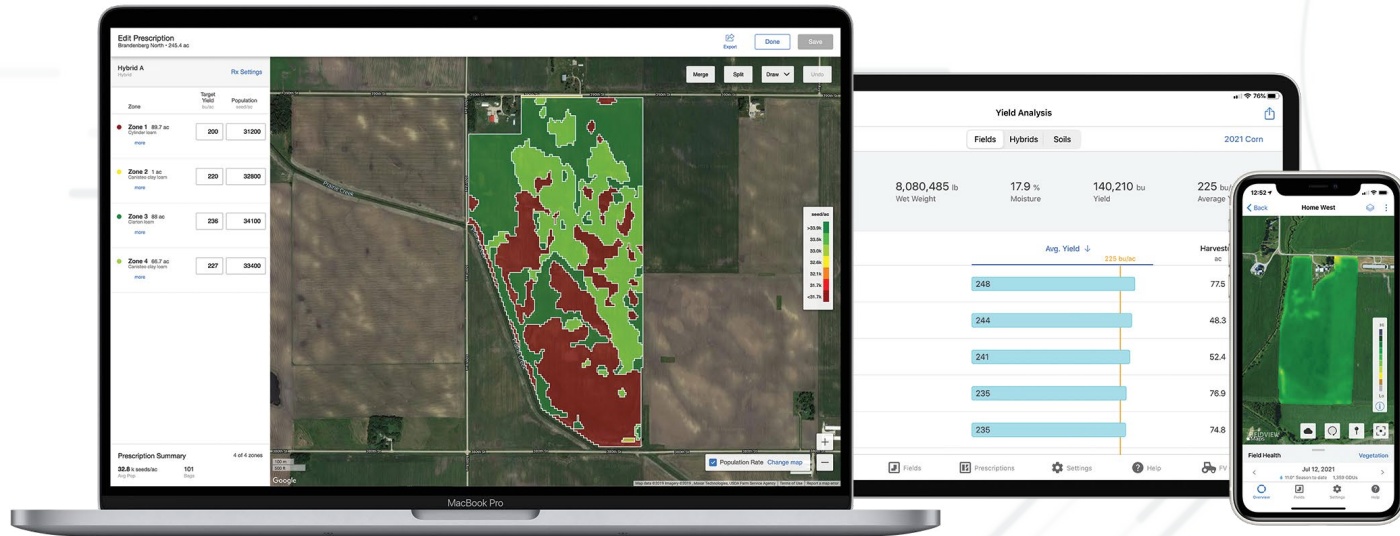




the digital farming platform  
that turns your field data into *insights*

turn field data into *insights*

FieldView™ enables you to collect, store and analyze data on one easy-to-use platform. This powerful digital tool is backed by dedicated customer support, data-driven recommendations and cutting-edge science. Get the insights you need to make more informed decisions and maximize return.



# building technology to *grow more*

We are the leader in bringing digital innovation to farmers, with a mission to help all the world's farmers sustainably increase their productivity through the use of digital tools. Behind every farmer's FieldView account is our unique blend of agronomic science, data science, software engineering and real-world farming experience.









# contents

## *collect data seamlessly*

easy field data collection and sharing .....	10
monitor progress in real time .....	12
the power of partnership .....	14

## *build prescriptions in minutes*

FieldView™ seed scripts.....	18
fertility scripts .....	20
crop protection scripts .....	22

## *scout fields from anywhere*

field health .....	26
--------------------	----

## *analyze yield data instantly*

yield analysis .....	30
----------------------	----

## *pricing and support*

features and pricing .....	34
customer support .....	36
Climate.com.....	38





## *get your data in one place*

Get all your data in one place with compatibility across many equipment types, makes and models, and connectivity to multiple farm management software systems. FieldView helps you easily collect, store and view field data for more of the inputs you manage through the season.



## *uncover valuable field insights*

Uncover valuable insights year-round with tools that help you analyze crop performance at the field level or by field zone, essentially making every field a potential test plot.



## *optimize your inputs*

Optimize inputs to maximize yield and profitability on every acre with variable rate seeding, fertility and crop protection prescription tools.





collect *data* seamlessly

# easy *field data collection* and sharing



FieldView helps you easily collect, store and visualize field data — recording every pass throughout the season. You can also upload data seamlessly from flash drives or other systems. You have the option to share your operation's data with your agronomic partners, making it easy for them to provide informed insights and recommendations.



### Share my Operation, Farms, or Fields

Sharing your account allows the email listed below to view and analyze your operational data. This does not share raw data files.

Add email address...

☒ Share whole operation

[+ Share a farm](#) [+ Share a field](#)

Operation Name	Farms	Fields	Sharing Permissions
My Operation	4/4	12/12	Can Edit - including Yield Data

By clicking "Share" below, you are allowing Climate to share your selected operation(s), farm(s) or field(s) with the individual(s) you have designated. Authorized non-Climate (3rd party) applications connected to the individual(s) you designated may access your data.

[Learn More](#)

Cancel Share

If you decide to share your data with your agronomic partners, you have the option to share your entire operation, one farm or single fields.

\*For questions about machine compatibility, visit [Climate.com/compatibility](https://climate.com/compatibility) or contact Climate Support at 1-888-924-7475.

FieldView is the

*most connected platform*

in the industry, with connectivity between our platform and many agronomic software partners. Data sharing is easy, and farmers are always in control of how their data is shared with partners.

The FieldView™ Drive is simple to install and compatible with 80% of equipment types.\*



monitor progress in *real time*

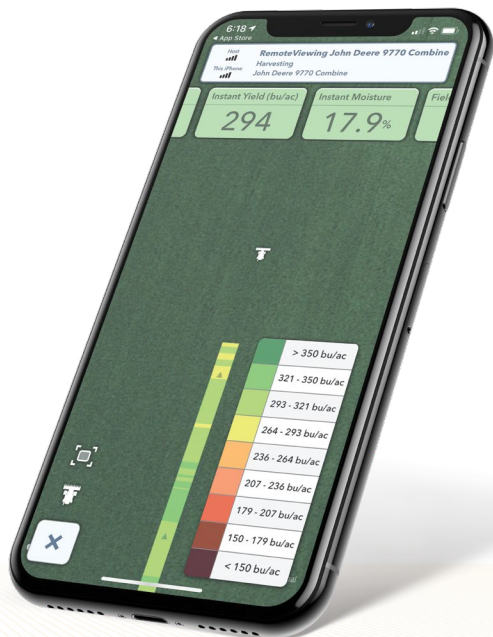


Monitor your progress and spot potential issues in real time as you pass through the field, tracking seed population rate at planting, application rates during growing season, and yield at harvest, so you can get the most out of every crop.

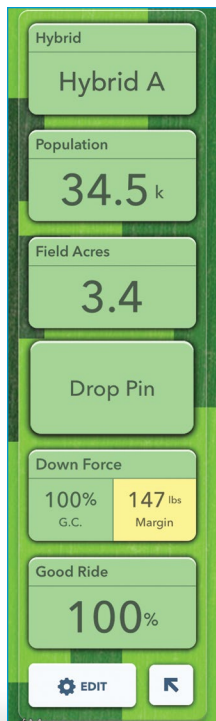


"It's simple for me to remote in to see what's going on and solve an issue with a phone call instead of driving to the field."

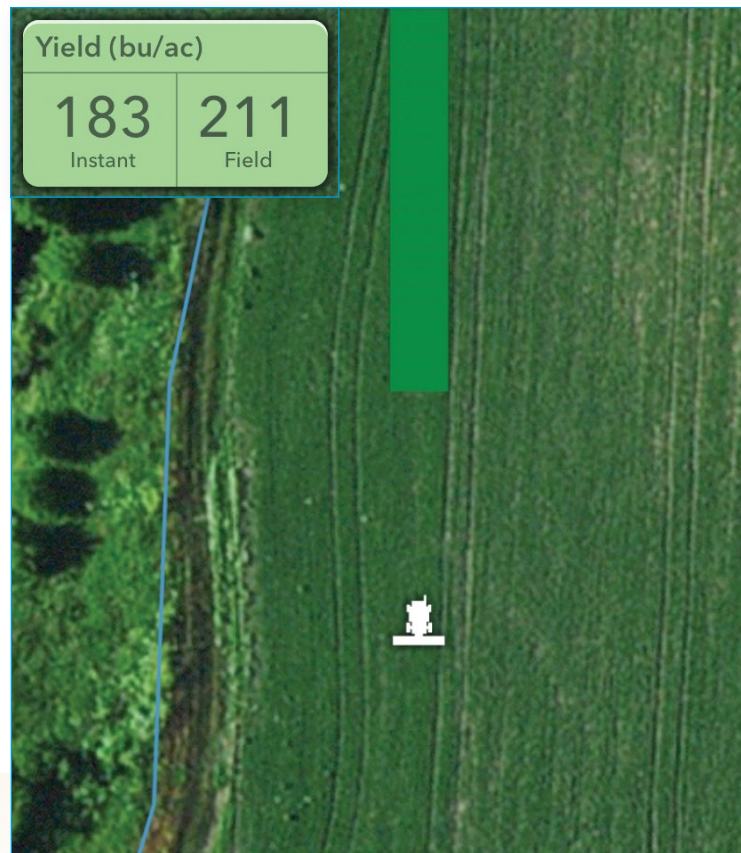
—Tim Brand, MO



Remote viewing allows you to see maps build even when you're not in the cab. Available on your iPhone® and iPad® devices.



Instantly track seed population and other key data.



Track yield in real time during harvest.



scan to watch video  
Learn More About  
Data Visualization





# the power of *partnership*

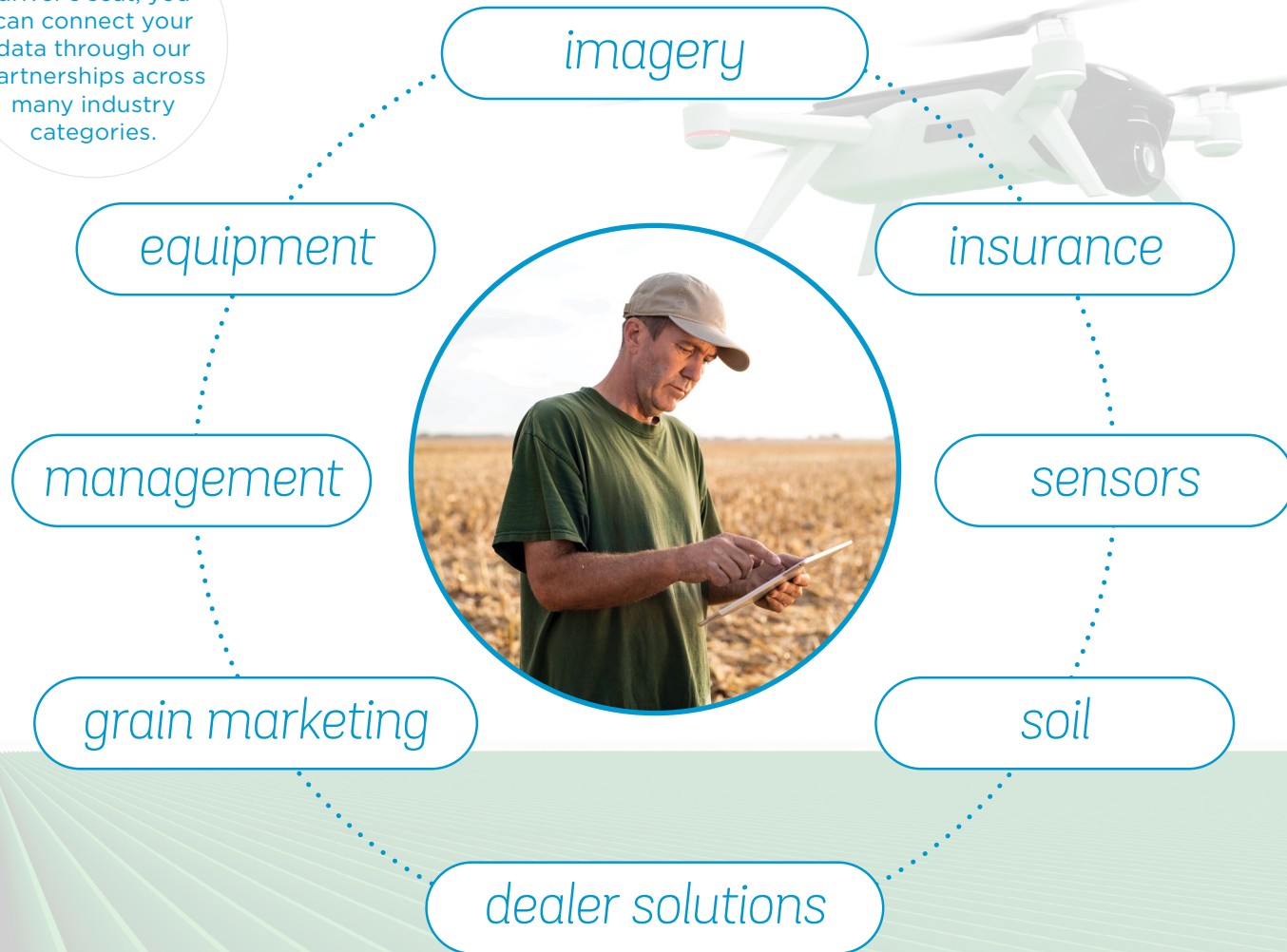


The FieldView platform is the central hub of digital farming innovation, providing you the choice to access a broad and interconnected set of tools from dozens of platform partners — from aerial imagery, to insurance, soil analysis and more.



Our data privacy principles put you in the driver's seat. Our commitment to data privacy ensures that you own your data, we do not sell your data and you control how your data is shared. Find out more on [Climate.com/data-privacy](https://climate.com/data-privacy).

You're in the driver's seat, you can connect your data through our partnerships across many industry categories.



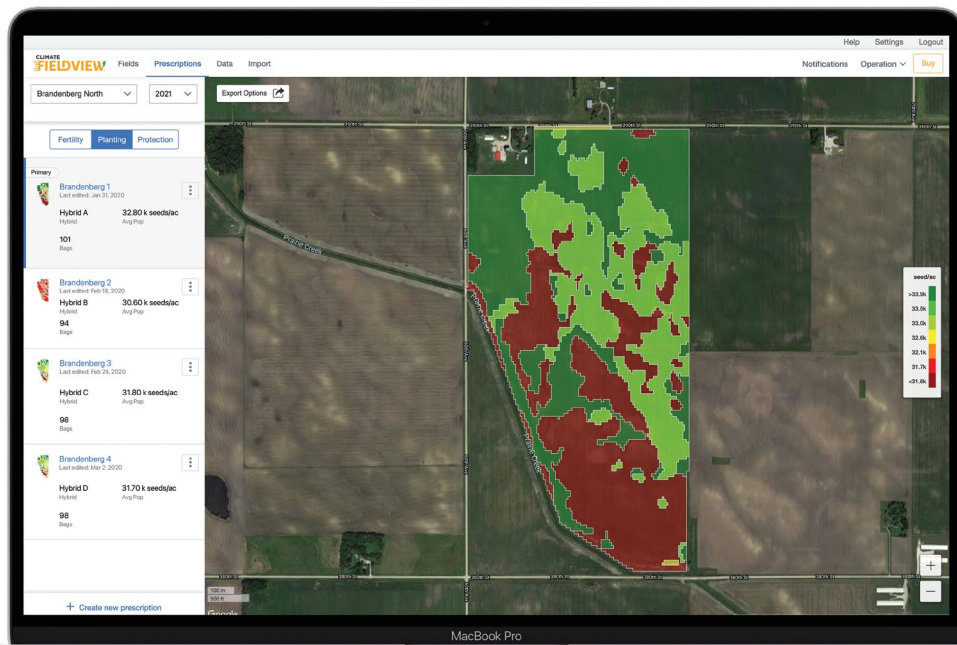






build *prescriptions*  
in minutes

# maximize yield with variable rate seed prescriptions



With all your data in one place, it's easy to build prescriptions on your own or with your dealer. FieldView seed scripts are powered by unique research and scientific models, along with your field data, to optimize your investment.\* You can also use our simple manual seed prescription tools to save time and improve productivity.\*\*



“Using the FieldView seed scripts tool has allowed us to use maybe not less seed, but place that seed where it can be more profitable.”

—Justin Hanson, IA

\*FieldView seed scripts available with a FieldView Premium subscription

\*\*Manual seed prescriptions available with a Fieldview Plus subscription

Zone	Target Yield bu/ac	Population seed/ac
<b>Zone 1</b> 0.1 ac Sylvan silty clay loam <a href="#">more</a>	248.9	35600
<b>Zone 2</b> 37.1 ac Muscatine silt loam <a href="#">more</a>	231.0	34500
<b>Zone 3</b> 77.3 ac Muscatine silt loam <a href="#">more</a>	257.7	36100

**Prescription Summary**
3 of 3 zones

**35.6 k seeds/ac**
51  
 Avg Pop
 Bags

FieldView seed scripts are customized for you by zone, population rate and yield, and available for nearly any seed brand.

View and edit your customized zones to get the most yield per acre.

Farmers using FieldView seed scripts saw an average increase of

**+5**  
bu/ac

compared to users who wrote their own scripts.\*

\*Assumptions: Comparing 281,000 ac in 4,179 fields. More than 25% of field had script. Products' maturity ranges between 95-115. Limiting comparisons to the same county; represents 79 counties in 10 Midwestern states. Minimum of 3 Advanced & DIY seed scripts in a county to be compared.

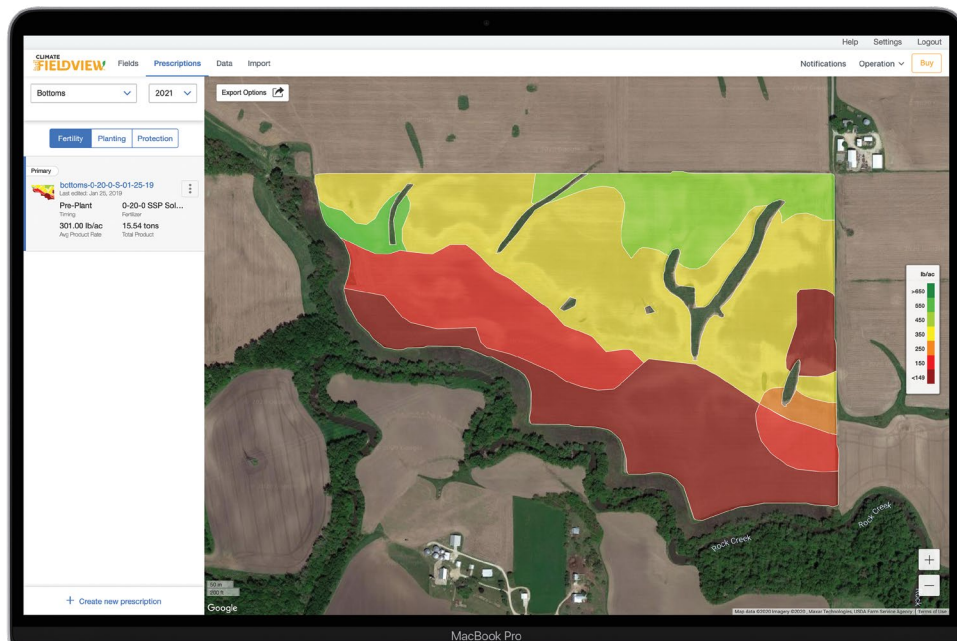
\*\*FieldView seed scripts available with a FieldView Premium subscription

Target Yield	Seed Cost	Grain Price	No. of Zones	Lower Investment	Higher Est. Yield
250	\$375.00	\$3.40	3	<input type="range"/>	

Tailor your prescription to your unique yield and profitability goals.\*\*



# *easily manage* your fertility prescriptions year round



Quickly address changing crop conditions in season with variable rate crop protection scripts for herbicide, fungicide, insecticide or growth regulators. Use map layers, such as field-level satellite imagery, to identify management zones and easily create scripts on your own or with your dealer.

### Edit Prescription

Speer Farm North • 114.5 ac

#### Anhydrous Ammonia

Fertilizer

[Rx Settings](#)

Zone	N Rate lb/ac	Product Rate lb/ac
<div>●</div> <b>Zone 1</b> 2.6 ac Sylvan silty clay loam <a href="#">more</a>	<input type="text" value="140"/>	171
<div>●</div> <b>Zone 2</b> 5.7 ac Greenbush silt loam <a href="#">more</a>	<input type="text" value="150"/>	183
<div>●</div> <b>Zone 3</b> 16.4 ac Osco silt loam <a href="#">more</a>	<input type="text" value="162"/>	198
<div>●</div> <b>Zone 4</b> 89.9 ac Muscatine silt loam <a href="#">more</a>	<input type="text" value="158"/>	193

#### Prescription Summary

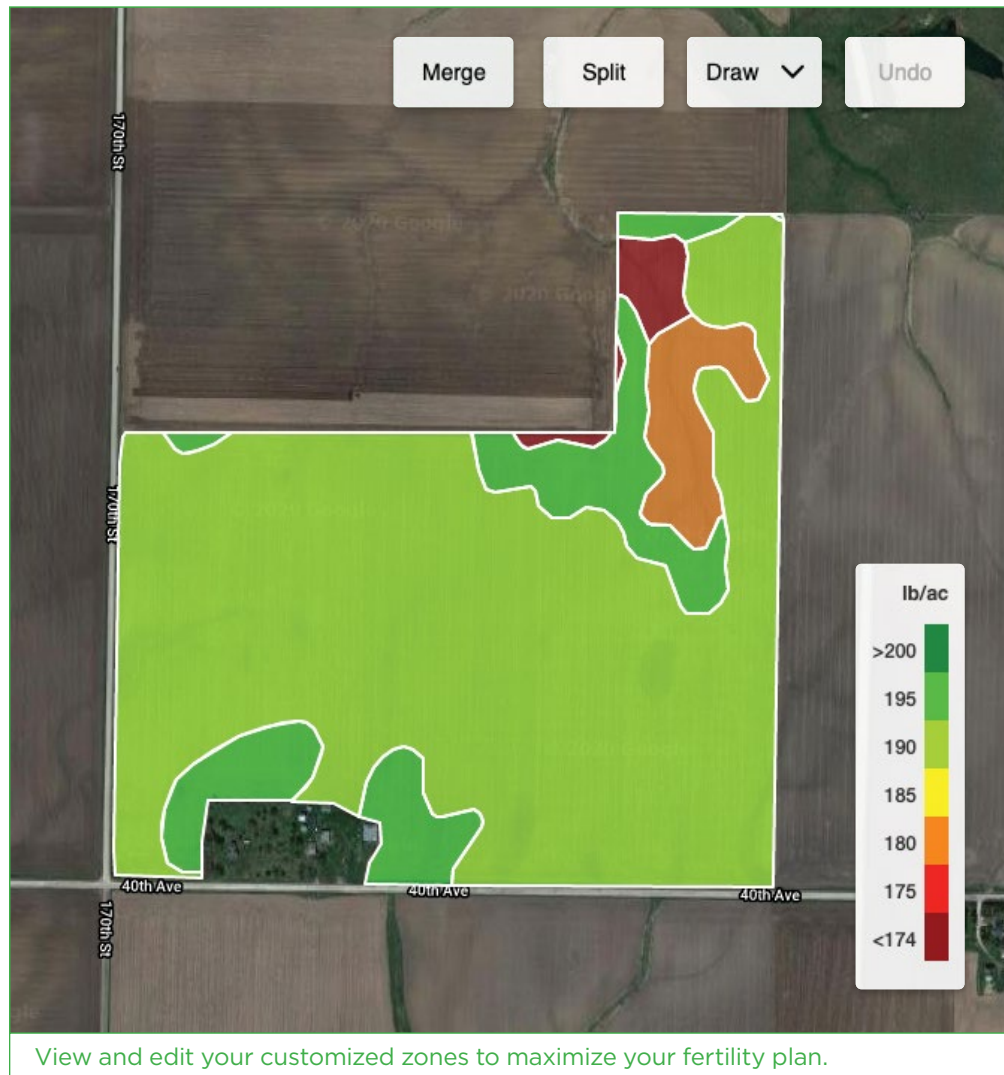
4 of 4 zones

**157.8 lb/ac**  
Avg N Rate

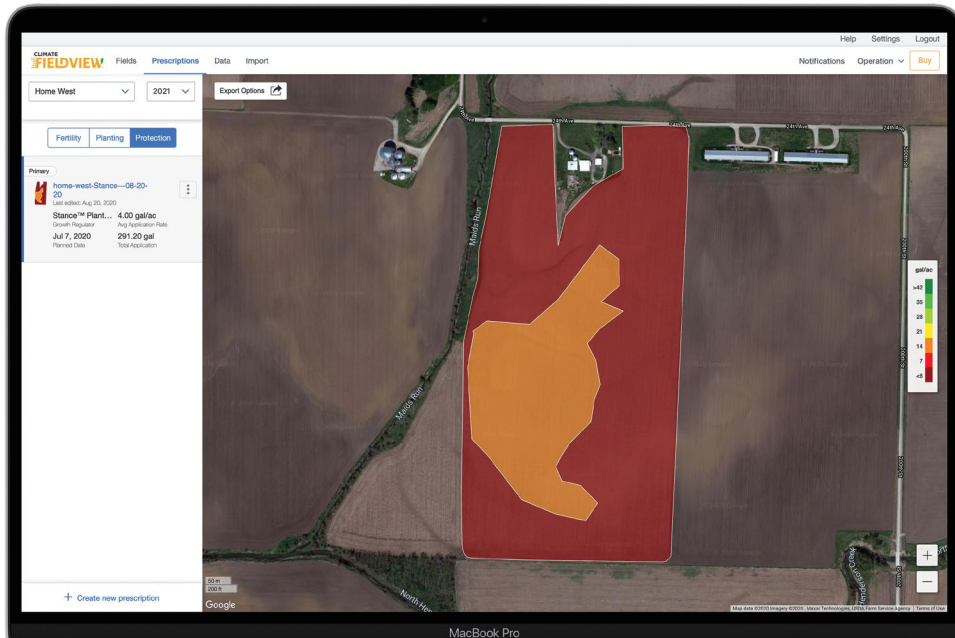
**192.4 lb/ac**  
Avg Product Rate

**11.02 tons**  
Total Product

Customize variable rate fertility prescriptions by zone and product rate.



# tailor *crop protection* application by zone

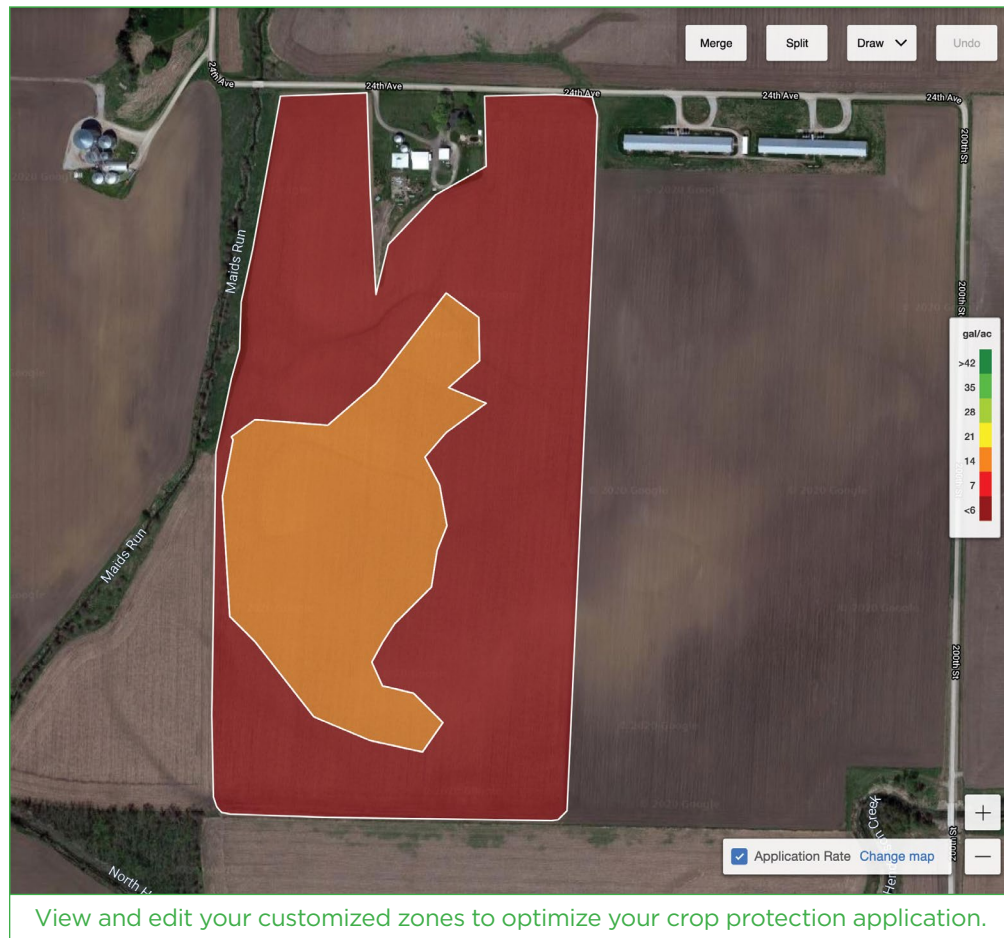


Quickly address changing crop conditions in season with variable rate crop protection scripts for herbicide, fungicide, insecticide or growth regulators. Use multiple map layers, such as field-level satellite imagery, to identify management zones and easily create scripts on your own or with your dealer.



Zone	Application Rate gal/ac
<div>●</div> <b>Zone 1</b> 19.4 ac Osco silt loam <a href="#">more</a>	<input type="text" value="15"/>
<div>●</div> <b>Zone 2</b> 52.9 ac Muscatine silt loam <a href="#">more</a>	<input type="text" value="0"/>
<div> <b>Prescription Summary</b> <span>2 of 2 zones</span> </div> <div> <div>4 gal/ac</div> <div>Avg Application Rate</div> </div> <div> <div>291.2 gal</div> <div>Total Application</div> </div>	

Customize variable rate crop protection prescriptions by zone and application rate.





*scout fields*

from anywhere



use imagery to *see your fields* like never before

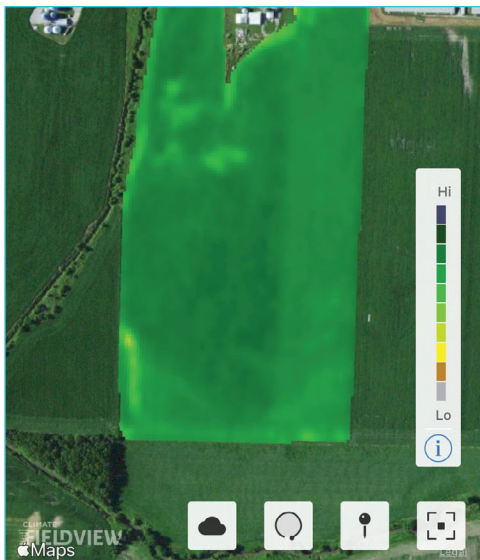


Find out what's happening beyond the end rows with consistent, high-quality imagery that can help you identify issues early, prioritize scouting and take action to protect yield. Save valuable time with electronic and print options created on climate.com or with your tablet to share with agronomic partners.



“Field health imagery definitely changes the way I scout. I can set a higher priority to what areas of the field I need to spend my time on.”

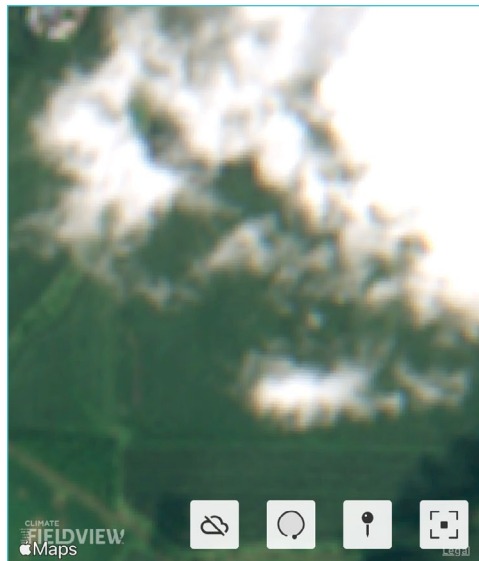
—Jon Schram, NE



#### Field Health

#### Vegetation

Use vegetation maps to monitor green plant material throughout the growing season.



#### Field Health

#### Scouting

Cloud-cover imagery provides a true-color, real-world view of your fields when clouds are present.

CLIMATE FIELDVIEW

Fields Prescriptions BETA Reports Import

Type to filter

Year

Farm 1,426.2 Total Area (ac)

Crop

Activity

bu

Map

Filter data by Crop, Year, Activity, Farm Name or Custom Text. Combine filters for even quicker search results.

Close

#### Region Report



#### Region note 1

Description, photos and more

5.6 ac  
Harvested

16.4%  
Moisture

262 bu/ac  
Avg Yield

By Hybrid

Avg Yield

acre

Hybrid A

258

2.8

By Soil

Avg Yield

acre

Hickory-Sylvan silt loa...

273

0.4

Sylvan silty clay loam, 1...

267

0.6

Oscot silt loam, 5 to 10...

262

4.0

Muscature silt loam, 0...

256

0.6

By Population

Avg Yield

acre

> 36.2 k seeds/ac

264

3.2

Create a field region report on Climate.com. By logging into your account, you can quickly build a PDF and share this detailed map with your agronomic partners.

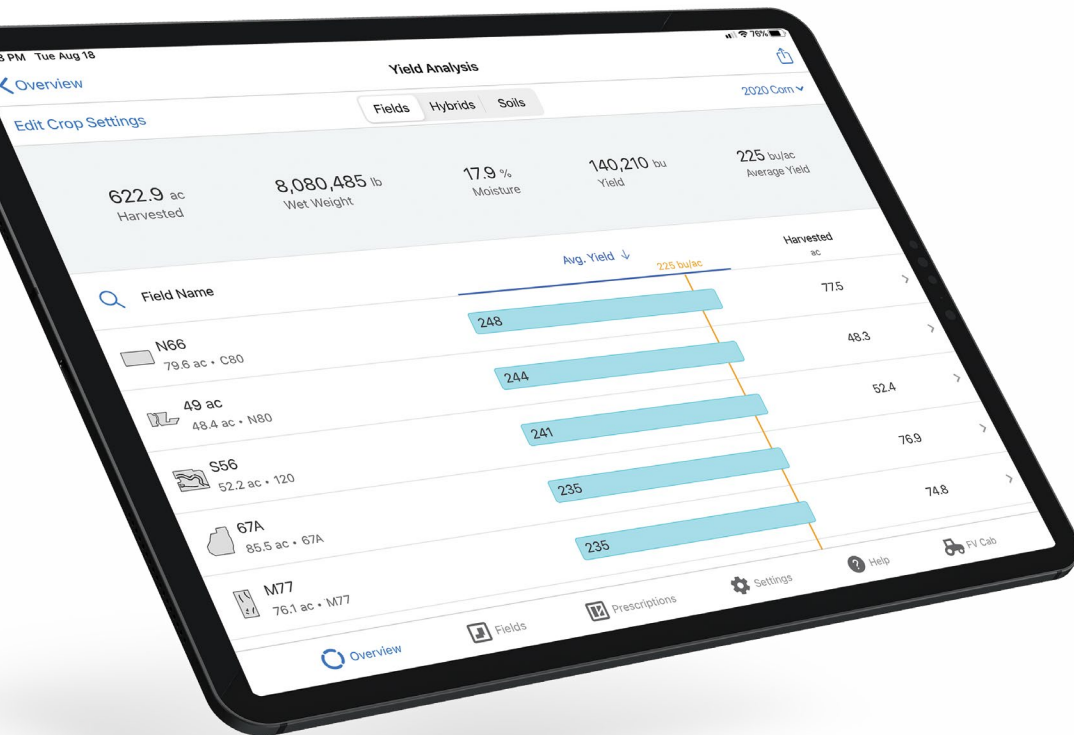








# analyze *crop performance* instantly



Analyze yield by seed type, soil, field or custom zone immediately after harvest, so you can see what worked and what didn't. Easily share with your agronomic partners to start planning for the next season. Compare critical data layers such as soil maps, application rate and seed population to yield to make more informed decisions.



"We use the yield analysis tool on every field for making decisions on population, seed selection and seed placement, and we've seen a big effect on our bottom line."

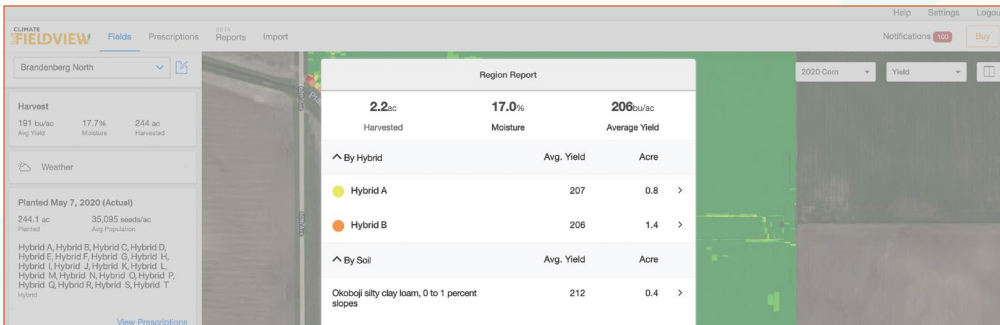
—Scott Friestad, IL



See how your agronomic decisions impacted yield by comparing critical data layers like the ones above showing how a fungicide trial application affected yield on different parts of a field.

2020 Corn All Operations		
Overview	Fields	Hybrids
1,060.9 ac Harvested	20.9 % Moisture	237,278 bu Yield
Field Name	Yield ↓ 224 bu/ac	Harvested ac
Big Bottom Operation	265	122.3 >
Elkhorn Creek Operation	265	122.3 >
Barbs 80 Operation	239	72.1 >
Green Valley Operation	234	94.0 >

Analyze yield performance by field, seed, and soil type.



Using your desktop computer, you can build custom reports on Climate.com that detail potential issues and compare results at harvest.



scan to watch video  
Learn More About  
Yield Analysis







# pricing and *support*

# FieldView *product features*

	»»» Prime	»»» Plus	»»» Premium
NEW OR ENHANCED FEATURES FOR 2024	FieldView Seed Scripts		Unlimited
	Enhanced Scripting		✓
	FieldView Insights		✓
	FieldView Premium Support		✓
	External API Connectivity	✓	✓
	Field Region Reports	✓	✓
	FieldView Reports*	✓	✓
	Data Manager*	✓	✓
	Image Enhanced Scouting	✓	✓
	Field Historical Weather	✓	✓
	Field Health Imagery	✓	✓
	Yield Analysis	✓	✓
	FieldView Drive Connectivity	✓	✓
	Account Sharing	✓	✓
	Manual Scripting	✓	✓
	Local On-Farm Support	✓	✓
	Remote View	✓	✓
	Data Inbox	✓	✓
	Digital Map Book	✓	✓
	Record Based Scouting	✓	✓
	Field Weather Forecast	✓	✓
	Phone Support	✓	✓
	Email and Live Chat Support	✓	✓
	Cloud Storage*	3 years	Unlimited

\*Coming Soon in 2024



# FieldView *pricing*

## Prime

For growers new to FieldView who want to move their operation from pencil to full potential.

**\$0/year**

## Plus

For growers who want to get even more out of their data: to learn what happened, see what could, and share that information with trusted partners.

**\$299/year**

## Premium

For growers who want to get the most out of their data, manage their farm with acre-by-acre precision, and receive personalized insights and support.

**\$799/year**



**\$399**

FieldView Drive



**\$499**

FieldView Drive Starter Kit

Includes a FieldView Drive and mounting kit for iPad® device

Find out how you can  
get a \$100 discount  
on FieldView.\*

Visit [Climate.com/Bayer-PLUS](https://Climate.com/Bayer-PLUS)  
or contact your local dealer.



Contact your dealer, [get started at Climate.com](https://Climate.com) or let us walk you through our plan options at 1.888.924.7475.

\*Offer available to new and existing Climate FieldView customers. Valid email address required. FieldView™ Drive and FieldView Drive Starter Kit are not included and must be purchased separately. Current users will receive one additional year of FieldView Plus or Premium from their current renewal date.



The Climate Support team is based in St. Louis, Mo.



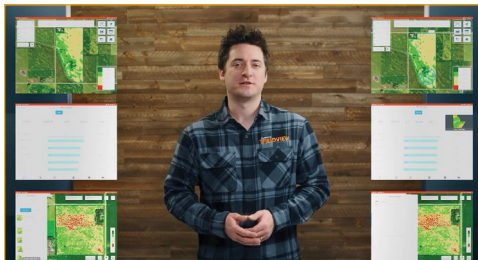
“I think what sets FieldView apart from other companies is that there’s an entire support team that’s just a phone call away.”

—Sara Haar, FieldView Dealer

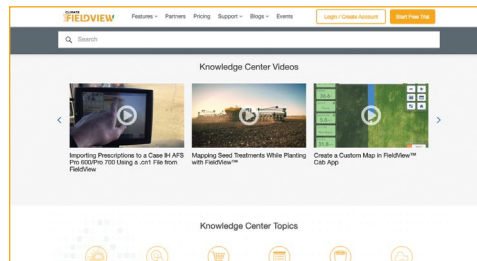
get *support* when you need it most

Our knowledgeable customer service staff is here to help you navigate our digital tools, upload data, and more. Contact us at 1.888.924.7475, [support@climate.com](mailto:support@climate.com) or live chat with us at [Climate.com](https://climate.com). If you need help getting your account set up or connecting your FieldView Drive for capture of critical planting and harvest data, contact your FieldView dealer or call our support team and we'll send a Climate Activation Specialist directly to your operation.

Or, if you're more of a do-it-yourselfer, go to [Climate.com](https://climate.com), click on the Support tab and choose Getting Started or Product Support to find how-to videos and a library of detailed product information.

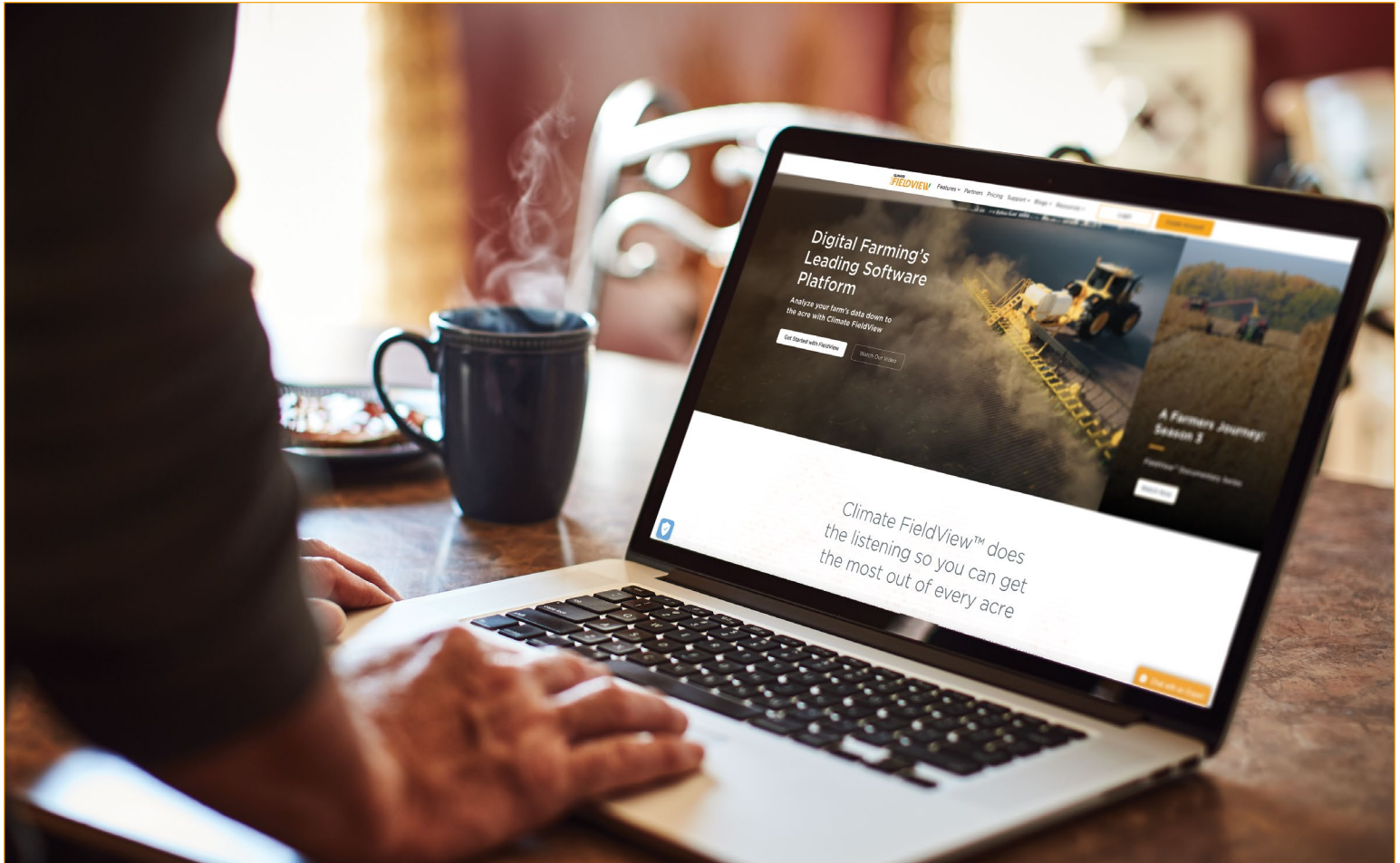


Watch step-by-step videos to help you get started.



Search and access information on any topic in the Knowledge Center.





[facebook.com/fieldview.us](https://facebook.com/fieldview.us)



[twitter.com/fieldviewhelp](https://twitter.com/fieldviewhelp)  
[twitter.com/fieldview](https://twitter.com/fieldview)



[youtube.com/@FieldView](https://youtube.com/@FieldView)

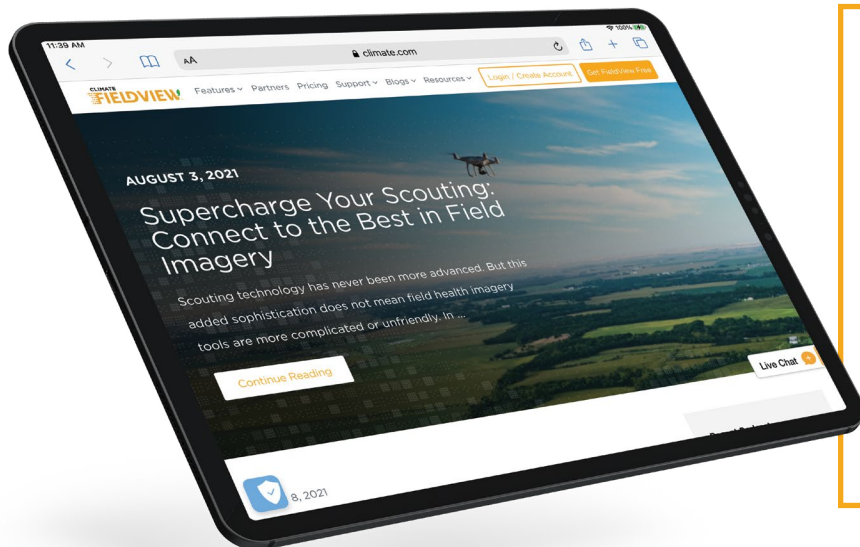


[linkedin.com/company/climate-llc](https://linkedin.com/company/climate-llc)

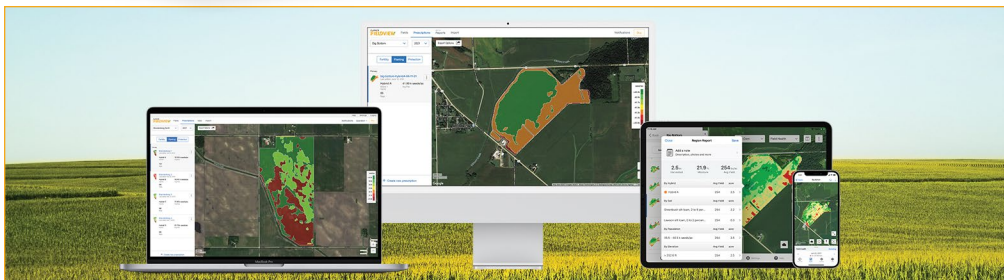


[instagram.com/fieldview\\_us](https://instagram.com/fieldview_us)

see what's driving *digital farming* forward



Climate.com is your destination to learn how to get the most out of FieldView. Manage your account. Find step-by-step videos and detailed how-to guides. Tune into the Around the Farm podcast to hear from experts across the ag industry. And find practical tips on digital farming on the FieldView blog.



Many FieldView features can be found on your desktop computer to make this powerful digital tool even more accessible. Build seed prescriptions, scout fields and upload historical data by logging into your account on Climate.com.



Search for Around the Farm on your favorite podcast provider.



**SPECIAL OFFER!**

Get a \$100 discount on FieldView.



Services and products offered by Climate LLC are subject to the customer agreeing to our Terms of Service. Our services provide estimates or recommendations based on models. These do not guarantee results. Consult with your agronomist, commodity broker, or other industry professional before making financial, farming, or risk management decisions. More information at <https://www.climate.com/legal/disclaimer>. FieldView™ is a trademark of Climate LLC. ©2024 Bayer Group. All rights reserved.